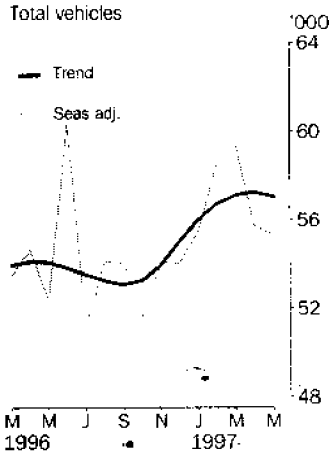


NEW MOTOR VEHICLE REGISTRATIONS

AUSTRALIA
PRELIMINARY

EMBARGO: 11:30AM (CANBERRA TIME) FRI 27 JUNE 1997

New vehicle registrations



MAY KEY FIGURES

TREND ESTIMATES

	May 97	monthly % change	annual % change
Total new motor vehicle registrations	57 040	-0.4	5.5
Passenger vehicles	48 115	-0.4	6.8
Other vehicles	8 925	-0.5	-1.1

SEASONALLY ADJUSTED

	May 97	monthly % change	annual % change
Total new motor vehicle registrations	55 355	-0.7	5.7
Passenger vehicles	46 721	-1.0	6.8
Other vehicles	8 634	1.1	0.1

ORIGINAL ESTIMATES

	May 97	monthly % change	annual % change
Total new motor vehicle registrations	58 605	2.6	1.3
Passenger vehicles	48 958	2.1	2.6
Other vehicles	9 647	5.3	-4.8

MAY KEY POINTS

TREND ESTIMATES

- The trend for total new motor vehicle registrations fell by 0.4% in May 1997 after having increased in each of the previous seven months. The trend level for passenger vehicles fell by 0.4% and other vehicles by 0.5%. Decreases were recorded for New South Wales, Victoria, Queensland and South Australia while increases occurred in the remaining States and Territories.

TAKE CARE!
Trend estimates are revised as new monthly data become available.

SEASONALLY ADJUSTED ESTIMATES

- Total new motor vehicle registrations for May 1997 decreased by 0.7% compared with April 1997. Passenger vehicles decreased by 1.0% whereas other vehicles increased by 1.1%. Most States and Territories fell except for Victoria, Queensland and the Australian Capital Territory.

ORIGINAL ESTIMATES

- Total new motor vehicle registrations for May 1997 showed an increase of 2.6% compared with April 1997. Registrations increased for all vehicle types except articulated and rigid trucks, while buses were unchanged. All States and Territories recorded increases except South Australia and the Northern Territory.

For further information about these and related statistics, contact Clare O'Loughlin on 07 3222 6180, or any ABS Office.

NOTES

FORTHCOMING ISSUES

<i>ISSUE</i>	<i>RELEASE DATE</i>
June 1997	25 July 1997
July 1997	29 August 1997
August 1997	26 September 1997

.....

CHANGES IN THIS ISSUE

There are no changes in this issue.

.....

TREND REVISIONS

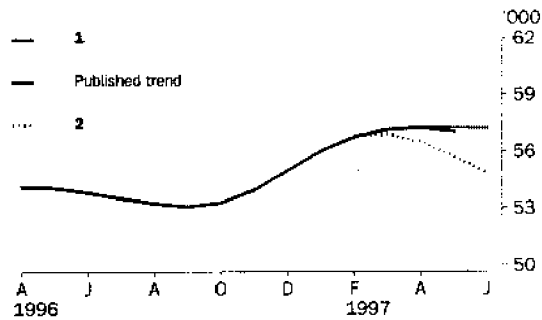
The most recent trend estimates are likely to be revised when new seasonally adjusted estimates become available.

The graph below presents the effect of two possible scenarios on the previous trend estimates:

- 1** The June seasonally adjusted estimate for total vehicle registrations is higher than the May seasonally adjusted estimate by 5.0%.
- 2** The June seasonally adjusted estimate for total vehicle registrations is lower than the May seasonally adjusted estimate by -5.0%.

The percentage change of 5.0% was chosen because the average absolute percentage change, based on the last 11 years, has been 5.0%.

TAKE CARE!
Trend estimates are revised as new monthly data become available.



An increase of 5.0% in total seasonally adjusted new motor vehicle registrations in June 1997 would produce a flattening in the revised trend from April 1997.

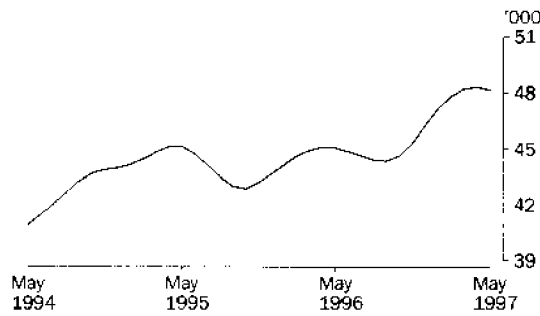
A 5.0% fall in the June 1997 seasonally adjusted figure would result in a strengthening decline in the revised trend from March 1997.

W. McLennan
Australian Statistician

VEHICLE REGISTRATIONS BY TYPE: Trend series

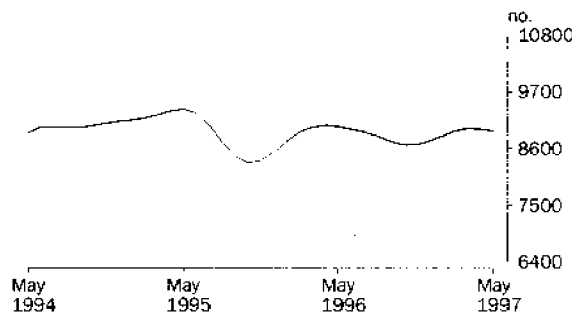
PASSENGER VEHICLES

The trend for new passenger vehicle registrations declined in May 1997 after rises in each of the previous seven months. The May 1997 trend level is 8.5% above the most recent low of September 1996.



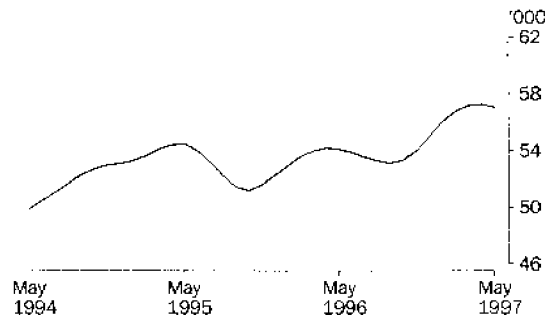
OTHER VEHICLES

The trend level for other vehicle registrations has decreased over the last two months but the May 1997 level remains 7.3% higher than the low in October 1995 and 1.3% lower than the recent high of April 1996.



TOTAL VEHICLES (EXCLUDING MOTOR CYCLES)

The trend estimate for total new motor vehicle registrations has risen between September 1996 and April 1997 before declining slightly in May 1997. The April 1997 trend level was 5.1% above the peak recorded in May 1995.





NEW MOTOR VEHICLES, Registrations by Type: All series

Month	Passenger vehicles	Other vehicles	Total
ORIGINAL			
1996			
March	45 564	9 239	54 803
April	41 606	8 461	50 067
May	47 713	10 131	57 844
June	52 082	11 611	63 693
July	45 971	9 027	54 998
August	45 574	8 783	54 357
September	42 893	8 210	51 103
October	47 131	8 613	55 744
November	45 253	8 355	53 608
December	46 165	8 423	54 588
1997			
January	39 604	6 566	46 170
February	46 563	8 308	54 871
March	46 366	8 628	54 994
April	47 959	9 162	57 121
May	48 958	9 647	58 605
SEASONALLY ADJUSTED			
1996			
March	44 584	8 930	53 514
April	45 573	9 107	54 680
May	43 762	8 624	52 387
June	50 950	9 449	60 398
July	43 012	8 219	51 231
August	44 716	9 405	54 121
September	45 057	9 001	54 058
October	43 292	8 403	51 694
November	45 785	8 320	54 105
December	45 129	8 914	54 043
1997			
January	47 213	8 381	55 594
February	49 231	9 349	58 580
March	49 766	9 579	59 345
April	47 191	8 537	55 728
May	46 721	8 634	55 355
TREND ESTIMATES(a)			
1996			
March	44 922	9 011	53 933
April	45 095	9 043	54 137
May	45 058	9 021	54 080
June	44 863	8 966	53 829
July	44 626	8 915	53 541
August	44 407	8 845	53 252
September	44 338	8 745	53 083
October	44 610	8 668	53 278
November	45 314	8 663	53 977
December	46 263	8 730	54 993
1997			
January	47 168	8 831	56 000
February	47 817	8 928	56 745
March	48 175	8 976	57 151
April	48 288	8 973	57 261
May	48 115	8 925	57 040

(a) Trend estimates for November 1996 to April 1997 have been revised.



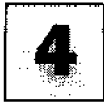
NEW MOTOR VEHICLES, Registrations by Type: Original

Month	Passenger vehicles	Light commercial vehicles	Rigid trucks	Articulated trucks	Non-freight carrying trucks	Buses	Total (excludes motor cycles)	Motor cycles
1996								
March	45 564	7 804	743	234	103	355	54 803	2 025
April	41 606	7 082	725	247	74	333	50 067	1 810
May	47 713	8 531	876	278	79	367	57 844	1 893
June	52 082	9 994	834	295	63	425	63 693	1 578
July	45 971	7 361	831	306	174	355	54 998	1 760
August	45 574	7 236	793	304	105	345	54 357	1 653
September	42 893	6 890	727	238	72	283	51 103	1 562
October	47 131	7 100	777	307	96	333	55 744	2 052
November	45 253	6 814	833	275	95	338	53 608	2 369
December	46 165	6 893	851	255	128	296	54 588	2 002
1997								
January	39 604	5 506	515	157	55	333	46 170	1 881
February	46 563	7 069	674	186	58	321	54 871	1 926
March	46 366	7 227	772	241	94	294	54 994	1 913
April	47 959	7 587	886	298	58	353	57 121	1 819
May	48 958	8 046	881	277	90	353	58 605	2 073

NEW MOTOR VEHICLES, Registrations by State: All series

Month	New South Wales	Victoria	Queensland	South Australia	Western Australia	Tasmania	Northern Territory	Australian Capital Territory	Australia
ORIGINAL									
1996									
March	18 318	13 142	10 992	3 867	5 909	961	666	948	54 803
April	18 348	11 519	9 471	3 286	5 072	818	616	937	50 067
May	19 411	14 868	10 388	3 792	6 252	1 202	823	1 108	57 844
June	23 395	14 355	13 157	3 932	6 030	994	798	1 032	63 693
July	18 861	13 478	10 585	3 457	5 692	1 341	637	947	54 998
August	18 213	12 880	10 903	3 569	5 753	1 336	599	1 104	54 357
September	17 335	12 553	9 789	3 437	5 338	1 348	535	768	51 103
October	18 877	14 098	10 298	3 365	6 296	1 307	561	942	55 744
November	18 455	13 399	9 823	3 515	5 677	1 267	610	862	53 608
December	17 793	13 737	10 544	3 582	5 903	1 737	501	791	54 588
1997									
January	16 047	10 975	8 552	2 942	5 397	935	519	803	46 170
February	18 926	13 958	9 823	3 827	5 961	898	551	927	54 871
March	19 390	13 559	10 619	3 627	5 224	958	704	913	54 994
April	19 916	14 167	10 521	3 716	5 886	1 047	852	1 016	57 121
May	20 713	14 498	10 547	3 640	6 164	1 211	771	1 061	58 605
SEASONALLY ADJUSTED									
1996									
March	17 647	12 851	10 947	3 741	5 684	1 073	632	938	53 514
April	19 594	12 774	10 018	3 738	5 749	1 090	637	1 080	54 680
May	17 185	13 165	9 674	3 621	5 835	1 207	688	1 011	52 387
June	22 129	13 521	12 783	3 668	5 646	1 055	647	949	60 398
July	17 577	12 693	9 079	3 384	5 761	1 299	551	886	51 231
August	18 086	12 572	11 351	3 453	5 740	1 264	627	1 027	54 121
September	18 746	13 194	10 300	3 431	5 776	1 232	571	808	54 058
October	18 025	12 970	9 166	3 077	5 884	1 150	526	895	51 694
November	17 875	13 758	10 749	3 456	5 447	1 344	626	850	54 105
December	18 534	13 553	10 123	3 563	5 739	1 169	573	790	54 043
1997									
January	19 426	13 714	9 928	3 673	5 919	1 215	728	991	55 594
February	20 232	14 533	10 813	4 012	6 234	1 093	664	999	58 580
March	20 602	15 529	11 206	3 750	5 414	1 165	662	1 018	59 345
April	18 917	13 503	10 040	3 935	6 222	1 270	822	1 019	55 728
May	18 914	13 572	10 365	3 601	5 934	1 236	690	1 042	55 355
TREND ESTIMATES(a)									
1996									
March	18 355	13 010	10 491	3 725	5 555	1 113	654	1 030	53 933
April	18 267	13 060	10 635	3 709	5 675	1 129	650	1 012	54 137
May	18 157	13 039	10 687	3 658	5 758	1 149	641	990	54 080
June	18 052	12 991	10 648	3 576	5 792	1 174	626	970	53 829
July	18 006	12 949	10 579	3 479	5 775	1 205	606	942	53 541
August	17 989	12 954	10 459	3 389	5 734	1 231	587	910	53 252
September	18 026	13 003	10 283	3 344	5 727	1 244	576	880	53 083
October	18 198	13 162	10 151	3 357	5 729	1 239	578	864	53 278
November	18 526	13 457	10 123	3 437	5 748	1 222	594	869	53 977
December	18 905	13 804	10 228	3 559	5 782	1 202	623	891	54 993
1997									
January	19 275	14 077	10 370	3 681	5 827	1 188	654	928	56 000
February	19 546	14 229	10 483	3 771	5 877	1 186	685	969	56 745
March	19 680	14 279	10 545	3 821	5 922	1 190	710	1 004	57 151
April	19 692	14 246	10 563	3 842	5 958	1 201	729	1 031	57 261
May	19 608	14 126	10 483	3 821	6 001	1 207	740	1 054	57 040

(a) Trend estimates for November 1996 to April 1997 have been revised.



NEW PASSENGER VEHICLES, Selected Make/Models: **Original**—May 1997

Make/Model	New South Wales	Victoria	Queensland	South Australia	Western Australia	Tasmania	Northern Territory	Australian Capital Territory	Australia
Ford									
Falcon/Fairmont	2 096	1 921	1 069	416	683	93	39	133	6 450
Festiva	368	324	248	109	114	28	6	23	1 220
Laser	285	220	129	49	68	11	5	15	782
Other	430	404	191	73	117	16	5	30	1 266
Total	3 179	2 869	1 637	647	982	148	55	201	9 718
Holden									
Commodore/Calais	1 910	1 454	1 139	472	554	87	50	95	5 761
Barina	321	190	146	68	83	24	2	28	862
Statesman/Caprice	153	144	73	27	51	3	2	7	460
Other	215	273	107	84	69	26	2	8	784
Total	2 599	2 061	1 465	651	757	140	56	138	7 867
Hyundai									
Excel	944	542	450	109	364	71	18	57	2 555
Lantra	518	261	263	49	188	31	15	20	1 345
Sonata	260	154	131	29	78	11	10	11	684
Other	75	45	40	12	23	6	1	3	205
Total	1 797	1 002	884	199	653	119	44	91	4 789
Mazda									
323	377	279	135	62	77	14	4	25	973
121	227	122	89	29	84	11	9	12	583
626	72	52	20	12	16	4	..	3	179
Other	17	24	12	6	4	1	64
Total	693	477	256	109	181	29	13	41	1 799
Mitsubishi									
Magna	888	783	434	313	274	74	27	84	2 877
Lancer	196	210	116	56	62	5	7	12	664
Verada	216	142	76	45	46	7	8	13	553
Other	332	220	252	42	124	25	16	25	1 036
Total	1 632	1 355	878	456	506	111	58	134	5 130
Nissan									
Pulsar	307	229	186	54	71	17	30	47	941
Patrol	114	63	75	20	63	8	17	3	363
Micra	67	52	55	9	6	3	4	12	208
Other	231	183	137	26	48	10	1	15	651
Total	719	527	453	109	188	38	52	77	2 163
Toyota									
Corolla	673	396	249	114	222	58	61	82	1 855
Camry	513	340	293	81	196	44	31	13	1 511
Vienta	480	228	122	26	77	9	5	13	960
Other	1 034	509	535	139	380	46	128	34	2 805
Total	2 700	1 473	1 199	360	875	157	225	142	7 131

EXPLANATORY NOTES

INTRODUCTION

1 This publication presents monthly data for registrations of new motor vehicles.

2 The statistics in this publication use the Vehicle Identification Number (VIN), adopted by the State and Territory motor vehicle registration authorities. The information contained in the VIN allows more accurate classification of vehicles. In the case of some States, data processed using the VIN are not strictly comparable with data processed prior to December 1990.

SCOPE AND COVERAGE

3 Motor vehicle registration statistics are obtained from State and Territory motor vehicle registration authorities. The statistics reflect information recorded in registration documents. With the exception of Queensland, the statistics do not depart significantly from actual registrations during the period. In the case of Queensland, a number of registrations processed in a month actually relate to vehicles registered prior to that month.

4 New motor vehicle registrations are obtained from New South Wales, Victoria, Queensland and Western Australia registration authorities on a weekly basis. Other registries provide data for each calendar month. The ABS processes the weekly registration data provided for the above-mentioned States and includes data for the relevant month in this publication. Data referring to the next month are withheld and included in the next month's publication. In some months, the ABS processes five weeks of data for the above States, while other months include four weeks of data. In months where five weeks of data are processed and depending on the actual pattern of registration processing, it is possible that there will be a greater number of registrations recorded because the carry forward from the previous month is likely to be greater than the carry over to the next month.

5 The scope of the statistics:

▪ includes:

- passenger vehicles
- light commercial vehicles
- trucks
- buses
- motorcycles (note: not included in totals)
- vehicles with diplomatic and consular plates
- State and Commonwealth owned vehicles.

▪ excludes:

- vehicles belonging to the defence forces
- recreation vehicles such as trail bikes and sand dune buggies (in those States where registration is required).

SEASONAL ADJUSTMENT

6 Seasonal adjustment is a means of removing the estimated effects of normal seasonal variation from the series so that the effects of other influences can be more clearly recognised.

7 Seasonal adjustment does not remove from the series the effect of irregular or non-seasonal influences (e.g. the introduction of new models, processing delays, industrial disputes).

EXPLANATORY NOTES

SEASONAL ADJUSTMENT *continued*

8 Irregular influences that are highly volatile can make it difficult to interpret the series even after adjustment for seasonal variation.

9 Extreme care should be exercised in using the seasonally adjusted series for new motor vehicle registrations in Tasmania, the Northern Territory and the Australian Capital Territory. The small numbers and volatile nature of these data makes reliable estimation of the seasonal pattern very difficult.

10 Seasonally adjusted series are calculated for the 'Passenger vehicles', 'Other vehicles' and 'Total vehicles' series for each State and Territory and are aggregated to obtain the total for Australia.

11 Seasonal adjustment factors are analysed and revised as necessary annually.

TREND ESTIMATES

12 The smoothing of seasonally adjusted series to create trend estimates reduces the impact of the irregular component of the seasonally adjusted series. The trend estimates are derived by applying a 13-term Henderson-weighted moving average to the respective seasonally adjusted series. These trend series are used to analyse the underlying behaviour of the series over time.

13 While this smoothing technique enables trend estimates to be produced for the latest month, it does result in revisions to the trend estimates for the most recent months as data for subsequent months become available. Generally subsequent revisions become smaller and after three months, usually have a negligible impact on the series. Changes in the original data and re-estimation of seasonal factors may also lead to revisions to the trend. For further information, see *A Guide to Interpreting Time Series — Monitoring 'Trends': an Overview* (1348.0) or contact the Assistant Director, Time Series Analysis on (06) 252 6345.

RELATED PUBLICATIONS

14 For a more detailed break-up of the monthly figures presented here, inquiries should be made to Clare O'Loughlin on 07 3222 6180 or to any ABS office. Data on total vehicle registrations, both new and re-registrations, is available in *Motor Vehicle Census, Australia, 31 May 1995* (9309.0).

SYMBOLS AND OTHER USAGES

n.p. not available for publication, but included in totals.

GLOSSARY

- Articulated trucks** Vehicles constructed primarily for load carrying consisting of a prime mover having no significant load carrying area but with a turn table device which can be linked to a trailer. With or without a trailer the gross combination mass will be 3.5 tonnes or more.
- Buses** Vehicles constructed for the carriage of passengers. Included are all passenger vehicles with 10 or more seats, including the driver's seat.
- Light commercial vehicles** Describes goods carrying vehicles less than 3.5 tonnes gross vehicle mass. Included are utilities, panel vans, cab-chassis and forward control vehicles (whether four-wheel drive or not).
- Motor cycles** Includes 2 and 3 wheeled mopeds, scooters, motor tricycles and motor cycles with side cars.
- Non-freight carrying trucks** Includes specialist vehicles such as ambulances, mobile cranes or vehicles fitted with special purpose equipment and having no goods carrying capacity.
- Passenger vehicles** Includes cars, station wagons, four-wheel drive passenger vehicles and forward control passenger vehicles with up to nine seats (including the driver).
- Registrations** This includes all registrations processed by the motor vehicle registration authorities in the States and Territories during the relevant period.
- Rigid trucks** Vehicles constructed primarily for load carrying with a gross vehicle mass of 3.5 tonnes or more.
- VIN** The Vehicle Identification Number (VIN) uniquely identifies each vehicle. Embedded in the number are details of make and model together with other relevant information about the vehicle. The VIN is collected by the motor vehicle registration authorities at the time of registration.





FOR MORE INFORMATION . . .

The ABS publishes a wide range of information on Australia's economic and social conditions. A catalogue of publications and products is available from any of our offices (see below).

INFORMATION CONSULTANCY SERVICES

Information tailored to special needs of clients can be obtained from the Information Consultancy Service available at ABS Offices (see below).

ABS PRODUCTS

A large number of ABS products is available from the ABS Bookshops (see below). The ABS also provides a subscription service – you can telephone the ABS Subscription Service Australia wide toll free on 1800 0206 08.

ELECTRONIC SERVICES

A large range of data is available via on-line services, diskette, magnetic tape, tape cartridge and CD ROM. For more details about our electronic data services, contact any ABS office (see below) or e-mail us at:

- * client.services@abs.gov.au

GENERAL SALES AND INQUIRIES

- * Sydney 02 9268 4611
- * Melbourne 03 9615 7755
- * Brisbane 07 3222 6351
- * Perth 08 9360 5140
- * Adelaide 08 8237 7100
- * Hobart 03 6222 5800
- * Darwin 08 8943 2111
- * Canberra 06 252 6627
- * Information Services, ABS
PO Box 10, Belconnen ACT 2616



2930100005972
ISSN 1323-4528

RRP \$13.50

© Commonwealth of Australia 1997

Produced by the Australian Government Publishing Service